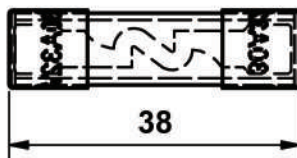
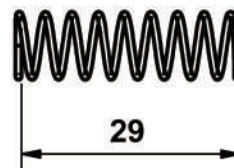
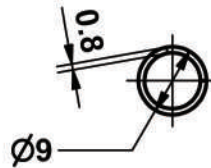


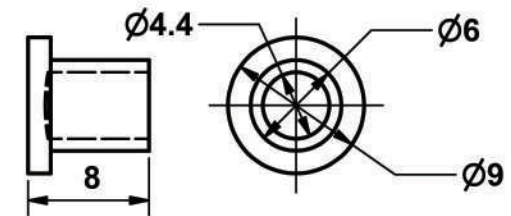
Fuse



Spring



Contact



In-Line Fuseholder

Specifications:


Applicable : For Fuse Type MFB, MFU, MFL and MFE(AGU)

Electrical : Rated for currents up to 40A, when proper spring is installed for fuse size

Contacts : Brass

Note : with other wire sizes or lengths available on special order

Range of wire gauge #8~#12

UNLESS OTHERWISE SPECIFIED DIMENSIONS ARE IN MM TOLERANCE DECIMALS ANGULAR X ± 0.5 ± 2' XX ± 0.25 DO NOT SCALE DRAWING		CUSTOMER NO.	DONGGUAN TIANRUI ELECTRONIC CO., LTD
		DRAWN BY	
		CHECKED BY	TITLE In-Line Fuseholder
		APPROVED BY	
P/N		DATE	2008/4/2
REV	A	SCALE	
		PART NO.	SL-705A
		DRAWING NO.	BA08040201